

Urgent Humanitarian Report

on the Situation of Displaced Families from Jenin Refugee Camp



Issued by the institutions and associations of the campaign "Be a Support to Your People" in the northern governorates of the West Bank

Jan 2025

حملة
**كن
سنداً
لشعبك**



Introduction to the Report

Since January 21, 2025, the Jenin Refugee Camp has been subjected to a wide-scale Israeli military assault, resulting in a complete blockade and severe restrictions on citizens' movement. This has disrupted daily life and created a dire humanitarian situation within the camp. These attacks have been accompanied by incursions and the destruction of critical infrastructure, such as homes, roads, and essential service networks. constituting blatant violations of human rights and international humanitarian law.

According to reports from the Palestinian Ministry of Health and the Palestinian Red Crescent, this assault has resulted in the deaths of 16 Palestinians, including women and children, and injured more than 50 others with varying degrees of severity. The military operation has also led to the displacement of hundreds of families to nearby areas, where they are enduring harsh living conditions due to a lack of basic supplies and healthcare services.

According to statements issued by the Jenin Municipality, the areas to which residents have been displaced are experiencing increasing pressure on public services, such as water, electricity, and healthcare facilities, necessitating urgent intervention by humanitarian agencies. The ongoing assault continues to exacerbate the humanitarian crisis, with the Israeli occupation disregarding international appeals and the absence of effective intervention to halt these violations.

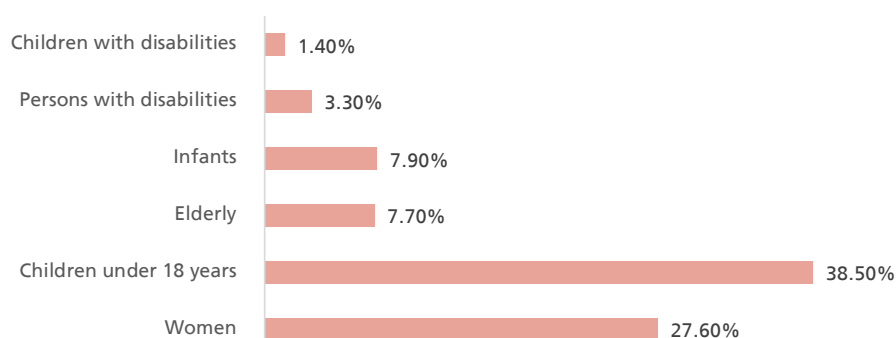
This report aims to provide an urgent humanitarian overview of the current situation by presenting preliminary information and statistics on the number of displaced families, identifying essential needs to ensure an effective emergency response, and offering recommendations to enhance protection and support efforts for affected families. The goal is to ensure the resilience of the camp's residents in the face of systematic Israeli policies.

Information on Displaced Families from Jenin Refugee Camp as of January 27, 2025

According to data released by civil society organizations under the "Be a Support to Your People" campaign, in collaboration with local authorities, the number of displaced families as of January 27, 2025, has reached approximately 2,180 families, encompassing around 11,872 individuals distributed across the following categories:

Categories	Total	Percentage of the total number of displaced family members
Women	3281	27.6%
Children under 18 years	4572	38.5%
Elderly	914	7.7%
Infants	937	7.9%
Persons with disabilities	395	3.3%
Children with disabilities	171	1.4%

Number of Displaced Individuals from Jenin Camp
by Population Categories



A vulnerable and marginalized majority, in need of urgent humanitarian interventions.

Percentage of children under 18 years old (38.5%)

- This group represents the largest proportion of the displaced population, emphasizing the urgent need for the provision of educational, psychological, and social support services. This group is the most affected by forced displacement and psychological pressures.

Percentage of women (27.6%)

- The high percentage of women among the displaced highlights the need for targeted support, including health assistance (particularly related to reproductive and mental health) and the strengthening of economic and social empowerment programs for female heads of households.

Elderly persons (7.7%)

- The presence of elderly individuals underscores the need for continuous healthcare services, as well as access to medication and basic necessities, given their heightened vulnerability to the deteriorating living conditions caused by displacement.

Persons with disabilities (3.3%) and children with disabilities (1.4%)

- These groups require specialized interventions, including assistive devices, rehabilitation services, and access to suitable environments in displacement areas.

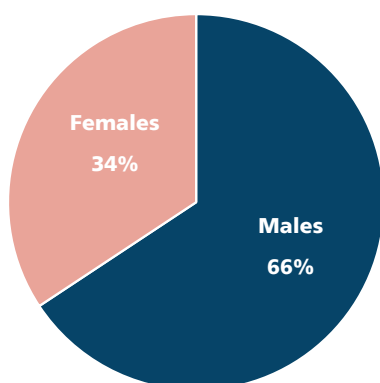
Geographical Distribution of Displaced Families from Jenin Refugee Camp

The displaced families have spread across several areas both within and outside the city of Jenin. Host areas are experiencing increasing pressure on basic services such as water, electricity, and healthcare. The key areas that have received displaced individuals include:

- Villages surrounding Jenin: Burqin, Yamun, Ya'bad, Arraba, Qabatiya, Silat al-Harithiya, Zababdeh, Rummana, Faqou'a, Anin, Kafr Qud, Jalma, Beit Qad, Deir Abu Da'if, Jalqamous, Kufr Dan, Kafr Rai, Sanur, Deir Ghazala, Aqaba, Ajjah, and others.
- City center of Jenin: Particularly the neighborhoods close to the camp, the eastern neighborhoods of the city, and the area surrounding the Arab American University.
- Relatively distant areas: Such as Tulkarm, Tubas, and the Al-Fara'a area.

Complications in the Social and Economic Situation

Distribution of Household Heads Among Displaced Families from Jenin Camp by Gender.



A significant proportion of the displaced individuals face economic challenges, with 68% of household heads suffering from unemployment. This exacerbates the living crisis and increases the need for urgent relief interventions. This figure reflects the difficult economic reality faced by the displaced, where displacement has led to the loss of income sources and the lack of employment opportunities, necessitating the intervention of livelihood support programs and the provision of temporary or permanent job opportunities.

The data also indicates that 65.7% of the displaced families are headed by men, while 34.3% are headed by women. This highlights the need for strategies to support women in their economic and social roles, along with providing opportunities for training and economic empowerment.

Analysis of Disability Types Distribution Among Displaced Individuals from Jenin Refugee Camp

Based on the data provided in the report, a total of 395 persons with disabilities have been recorded among the displaced, in addition to 171 children suffering from various disabilities. This represents a significant humanitarian challenge that requires an urgent and targeted response.

Relative Distribution of Disability Types Among the Displaced

According to the chart, the disabilities among the displaced are distributed as follows:

Type Of Disabilities	Total	Percentage	Notes
Mobility Disability	230	58.2%	Represents the largest percentage, requiring assistive devices.
Visual Disability	62	15.7%	Needs medical glasses and visual adaptation devices.
Hearing Disability	43	10.9%	Requires hearing aids and communication programs.
Intellectual Disability	81	20.5%	Needs care programs and psychological support.
Multiple Disabilities	50	12.6%	Requires comprehensive and integrated care.

Key Challenges Associated with Disabilities Among the Displaced

Weak medical response and specialized services:

- Displaced people with disabilities face a lack of specialized healthcare, such as physical therapy and assistive devices.
- There is a shortage of qualified medical staff to manage chronic and complex cases.

Difficulties in mobility and integration in displacement areas:

- The presence of 58.2% of displaced individuals with mobility impairments requires ensuring an environment with accessible pathways and obstacle-free spaces.
- The absence of wheelchairs and appropriate facilities exacerbates the mobility challenges for persons with disabilities.

Weak psychological and social support:

- People with disabilities, especially children, suffer from the psychological effects of forced displacement, necessitating psychological support programs and family awareness initiatives.
-

Educational and adaptation challenges:

- Children with intellectual and visual disabilities face difficulties integrating into alternative education systems in host areas.
- The lack of specialized educational materials for these groups hinders the continuation of their education.

Urgent Needs of Displaced People with Disabilities

Medical and Rehabilitation Assistance:

- Provide wheelchairs, hearing aids, and visual aids.
- Offer rehabilitation and physical therapy services in displacement areas.

Improvement of Accessibility:

- Establish safe and equipped environments that address the needs of persons with disabilities in shelters and public facilities.
- Provide accessible transportation to ensure safe mobility.

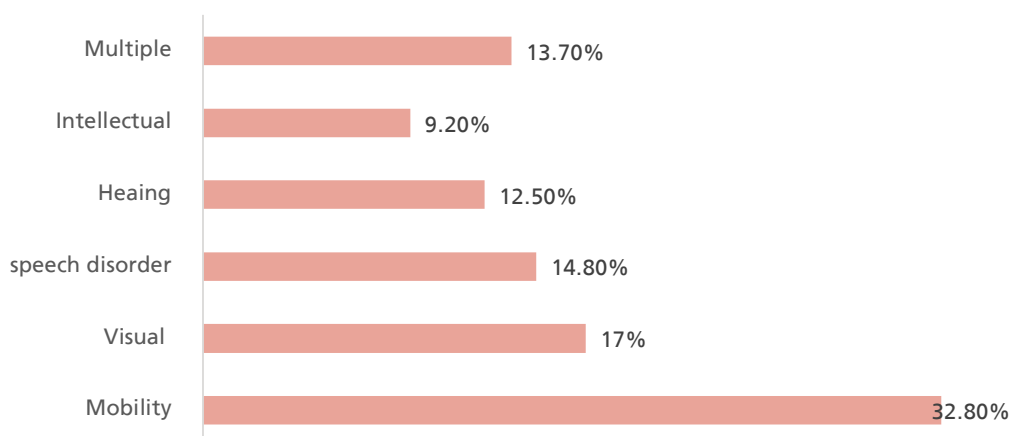
Psychological and Social Support Programs:

- Develop psychological support programs for families caring for persons with disabilities, contributing to improved adaptation to displacement conditions.
- Provide awareness programs and community integration initiatives.

Economic Empowerment of Persons with Disabilities:

- Design vocational training programs that help integrate persons with disabilities into the labor market in accordance with their abilities and potential.

Distribution of Displaced Persons with Disabilities
from Jenin Camp by Type of Disability



Quick Analysis of the Nature of Damage Caused by the Israeli Military Operation in Jenin Refugee Camp

The data and statistics provided in the report indicate that the large-scale Israeli military operation, which began on January 21, 2025, resulted in significant damage across various levels, creating an escalating humanitarian crisis within the camp. Below is a detailed analysis of the nature of the damage caused by this operation:

First: Humanitarian Damage

The military operation has resulted in direct human losses, which are as follows:**Casualties:**

- The martyrdom of 16 Palestinians, including women and children, reflecting the excessive use of force and the targeting of civilians.
- Over 50 individuals were injured with varying degrees of severity, which exacerbates the pressure on local health services already struggling with resource shortages.

Displaced Persons:

- A total of 2,180 families, comprising approximately 11,872 individuals, have been displaced, leading to a major displacement crisis that is affecting the host communities.
- The number of women and children among the displaced is high, with children under the age of 18 representing 38.5% of the total displaced, thereby increasing the demand for specialized support services.

Vulnerable Groups:

- Persons with disabilities and the elderly have been severely affected, with these groups making up 12.4% of the displaced population, which requires the provision of adequate healthcare and rehabilitation services.

Second: Material Damage

Reports indicate systematic destruction of infrastructure and both public and private property, resulting in the following:

Homes and Infrastructure:

- Partial or complete destruction of a large number of residential homes, displacing hundreds of families and leaving them without safe shelter.
- Damage to vital roads and streets within the camp, hindering mobility and affecting the ability of medical and humanitarian teams to access the affected areas.

Local Economy:

- Destruction of commercial stores and small workshops has led to a complete halt in economic activities, causing hundreds of families to lose their primary sources of income.
- 68% of the heads of displaced households are unemployed, exacerbating the poverty situation and increasing the urgent need for economic support.

Third: Psychological and Social Damage

The damage extends beyond the physical aspects, having a profound psychological and social impact on the community. This can be summarized as follows:

Psychological Effects on Children:

- Children have been exposed to severe psychological trauma due to raids, explosions, and the loss of safety, requiring specialized psychological support programs.
- The disruption of education and increased feelings of anxiety and fear among many children.

Family Disintegration and Fragmentation:

- Displacement has led to families being scattered across multiple areas, affecting family bonds and social cohesion within the camp.
- Increased dependence on external humanitarian aid due to the loss of income sources.

Additional Burdens on Women:

- Female heads of households (34.3%) are facing increasing pressures in the harsh displacement conditions, with growing responsibilities for providing food and care for family members.

Fourth: Security and Political Impacts

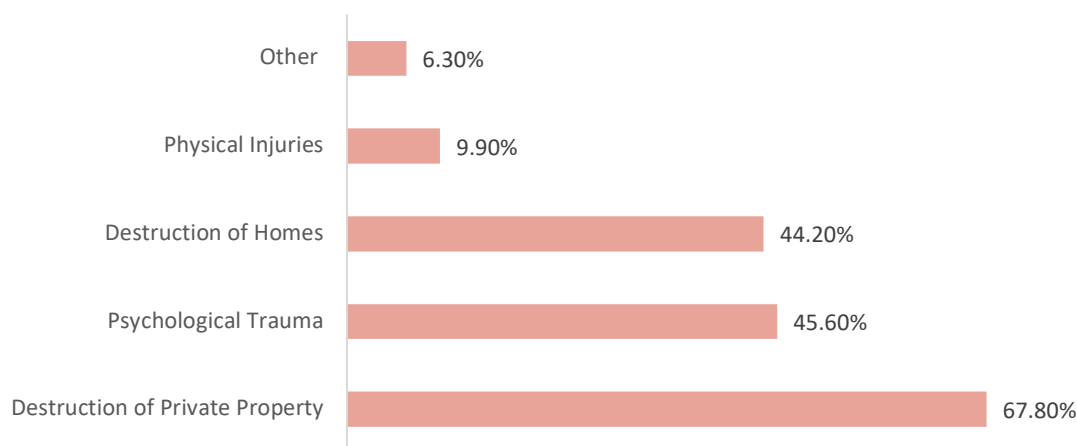
Escalation of Military Restrictions:

- The occupation has imposed strict restrictions on movement, including entry to and exit from the camp, further isolating the residents and complicating the delivery of humanitarian aid.
- Targeting the camp's security infrastructure has resulted in a dangerous security vacuum, increasing the likelihood of future unrest.

Erosion of Residents' Trust in the International Community:

- The continuation of attacks amidst the absence of effective international intervention has left residents feeling isolated and unprotected under international law.
- The inadequate response from international organizations has created a state of frustration and concern about the camp's future.

The Nature of Damages Sustained by Displaced Families from Jenin Camp as a Result of the Recent Israeli Military Operations



Analysis of Urgent Humanitarian Support Priorities Based on the Provided Data

Based on the data and charts included in the report on the needs of displaced families from Jenin Camp, several conclusions can be drawn to determine the priorities for humanitarian support necessary to ensure an emergency response to the humanitarian crisis faced by the displaced.

Critical Priority Basic Needs

A. Shelter and Emergency Assistance (34%)

- The data indicates that securing shelter is among the most urgent priorities, as thousands of families have been displaced to overcrowded areas lacking adequate infrastructure.
- There is an urgent need to provide tents and shelter centers equipped with essential facilities.
- Basic living supplies, such as blankets, mattresses, and hygiene items, must be made available.

B. Food Security and Nutrition (28%)

- With a significant proportion of displaced individuals being women and children, food security remains a top priority as families face severe shortages of essential food supplies.
- Emergency food baskets containing staple items (flour, rice, milk, canned foods) need to be distributed.
- Special meals for infants and the elderly should be provided to ensure their health and safety.

C. Healthcare and Medical Services (22%)

- Displaced individuals are suffering from a lack of primary healthcare services due to the immense pressure on healthcare facilities in host areas.
- Mobile clinics must be deployed to serve displaced populations in remote areas.
- Essential medicines and medical supplies for chronic diseases and emergency cases are urgently needed.

Medium-Priority Needs

A. Psychological and Social Support (10%)

- Children constitute approximately 38.5% of the displaced population and are the most vulnerable to psychological distress caused by trauma.
- There is a need for psychological support programs targeting children and women to help them cope with the current situation.
- Organizing recreational and educational activities for children is essential to mitigate psychological trauma and strengthen family cohesion.

B. Water and Sanitation Services (6%)

- Host areas are experiencing water shortages and deteriorating sanitation services due to population overcrowding.
- It is crucial to provide access to clean and safe water sources to prevent the spread of infectious diseases.
- Establishing mobile sanitation facilities is necessary to ensure adequate sanitary conditions.

Long-Term and Sustainable Needs

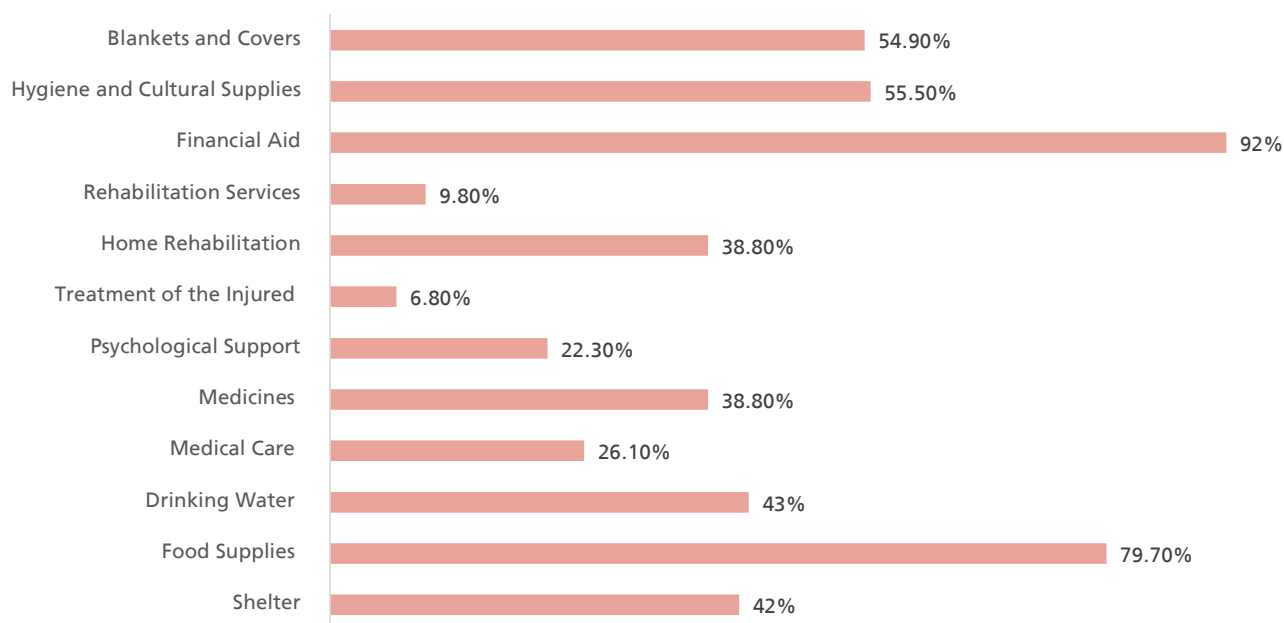
A. Employment Opportunities and Livelihoods (6%)

- With unemployment rates among heads of households reaching 68%, economic empowerment and vocational training programs are critical to helping the displaced restore their income sources.
- Implementing “cash-for-work” programs can enable families to sustainably meet their basic needs.

B. Educational Support (4%)

- The disruption of children’s education due to displacement necessitates the provision of alternative educational environments to ensure continuity in learning.
- Temporary educational spaces and educational materials must be provided for displaced students.

Needs and Priorities of Humanitarian Support Required for Displaced Families from Jenin Camp



This report reflects the efforts of the institutions, associations, and volunteers of the “Be a Support to Your People” campaign in monitoring the humanitarian situation in the northern West Bank governorates. It documents the essential needs of displaced families with precision and professionalism. The campaign has played a key role in highlighting the difficult living conditions faced by the displaced, focusing on gaps in required assistance, and working to amplify the voices of those affected to the relevant authorities.

The report’s findings underscore the importance of community solidarity and swift response in addressing crises. The “Be a Support to Your People” campaign continues its efforts to ensure the provision of necessary humanitarian support and to strengthen the resilience of affected families, while calling for greater intervention from local and international bodies to meet the growing needs and achieve a sustainable response.

January 27, 2025